

UNIFORM & SPECIALTY CATALOG

FDRCORP.COM • 800-FDR-0097



5 DECADES AND COUNTING...

For over 50 years our family-run business has been a leader in the healthcare laundry, uniform and linen industries. Because our family is involved with every aspect of the company, FDR Services' expertise in the industry is second to none, providing exceptional patient care through our healthcare laundry and linen management solutions.

We ensure our customers' needs are at the forefront of our business. This is why we are singularly focused on assisting our customers to enhance their patients' experience. Whether you are a regional acute care hospital system or small outpatient facility, we have you covered by having the right product that is tailored and personalized to meet your specific needs.

CUSTOM EMBROIDERY

FDR Services has a state of the art uniform department housing multiple embroidery machines. This gives us the capability of being able to tailor any garment to the customer's needs. We can embroider anything from facility logos to doctors' names and much more.



RFID TRACKING

FDR Services has implemented a new step in our process in which we insert an RFID chip into each of our garments. This chip allows us to look up individual garments and track their location from the time a garment leaves our plant to the time it gets scanned back into the plant.



TABLE OF CONTENTS

Scrub Apparel..... 1

Medical Apparel..... 6

Protective Apparel..... 8

Industrial Apparel..... 11

Culinary Apparel..... 22

Mops 28

Mats 36

SCRUB APPAREL

Scrub Shirt

65% Polyester / 35% Cotton

- Long cap sleeves
- Left breast pocket
- Reinforced V-neck
- Reversible
- Unisex Fit
- Color coded by size



Sizes: XS-XL (2XL-5XL Upon Request)



SCRUB APPAREL

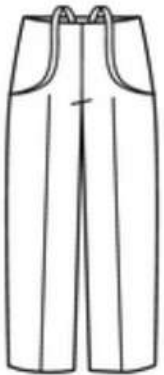
Scrub Pant

65% Polyester / 35% Cotton

- Drawstring waist
- Right back pocket
- Reversible
- Unisex Fit
- Color coded by size



Sizes: XS-XL (2XL-5XL Upon Request)



SCRUB APPAREL

Scrub Dress

65% Polyester / 35% Cotton

- Set-in sleeves
- Two lower pockets
- Scissor holder in the right pocket
- Back opening with snap closure
- Drawstring belt in the back
- Classic Fit



Sizes: XS-XL (2XL-4XL Upon Request)

Ciel Blue



SCRUB APPAREL

Scrub Skirt

65% Polyester / 35% Cotton

- Two sided insert pockets
- Multi-stitched elastic waistband
- Classic Fit



Sizes: XS-XL (2XL-4XL Upon Request)



SCRUB APPAREL

Warm-up Jackets

65% Polyester / 35% Cotton

- Raglan sleeves
- Two lower pockets
- Concealed pocket inside the left pocket
- Snap front closure
- Coordinating knit cuffs
- Unisex Fit



Sizes: XS-XL (2XL-5XL Upon Request)



MEDICAL APPAREL

Lab Coat

65% Polyester / 35% Cotton

- 41" in length
- Button front closure
- Left breast pocket
- Two lower pockets
- Side slits for pocket access
- Unisex Fit



Sizes: 2XS-XL (2XL Upon Request)



White



MEDICAL APPAREL

Lapel Coat

65% Polyester / 35% Cotton

- 30" in length
- Button Front closure
- Left breast pocket
- Two oversized lower outside pockets; Large enough to accommodate Tablet PC
- Unisex fit



Sizes: 2XS-XL (2XL-3XL Upon Request)



PROTECTIVE APPAREL

Cover Gown

80% Polyester / 20% Cotton

- Snap front
- No Pockets
- White polyester knit cuffs
- Convertible Collar
- No side slits



Sizes: 2XS-XL (2XL-3XL Upon Request)



PROTECTIVE APPAREL

Isolation Gowns

65% Polyester / 35% Cotton

- Front and sleeves made of single-ply fluid resistant barrier fabric
- Back made of yellow polyester/ carbon fabric
- Two sets of tie closures (one at the back of the neck, one at the waist)
- White knit cuffs
- Unisex fit
- RFID Tracking also allows us to track the life cycle of each gown (75 washes)



Sizes: One size fits most

Yellow



PROTECTIVE APPAREL

Fluid Resistant Lab Coat

65% Polyester / 35% Cotton

- Front and sleeves made of single-ply fluid resistant barrier fabric
- Snap closure
- Throat-guard collar
- Two lower pockets
- Knit cuffs
- Unisex fit



Sizes: 2XS-XL (2XL-3XL Upon Request)





INDUSTRIAL
APPAREL

INDUSTRIAL APPAREL

Industrial Work Shirt

65% Polyester / 35% Cotton

- Comes in long sleeve and short sleeve
- Crease resistant
- Six buttons down and one gripper button at the neck
- Two top pockets with button closure



Sizes: S-XL (2XL-4XL Upon Request)



INDUSTRIAL APPAREL

Polo Shirt

100% Polyester Blend

- No pocket
- Shrink fade and wrinkle resistant
- Short sleeve
- Three button placket



Sizes: S-XL (2XL-6XL Upon Request)



INDUSTRIAL APPAREL

Straight Leg Pants

65% Polyester / 35% Cotton

- Hemming services available
- Two back pockets with button closure
- Two side slit pockets
- Belt loops around the waist
- 36"



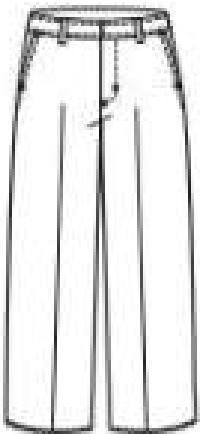
Sizes: 28-60

Black

Charcoal

Navy

Khaki



INDUSTRIAL APPAREL

Cargo Pants

65% Polyester / 35% Cotton

- Hemming services available
- Two side cargo pockets with snap closure
- Two back pockets with button closure
- 36" in length



Sizes: 28-50

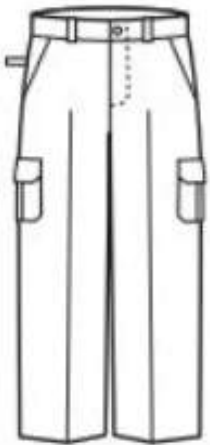


Black

Charcoal

Navy

Khaki



INDUSTRIAL APPAREL

Industrial Work Shirt

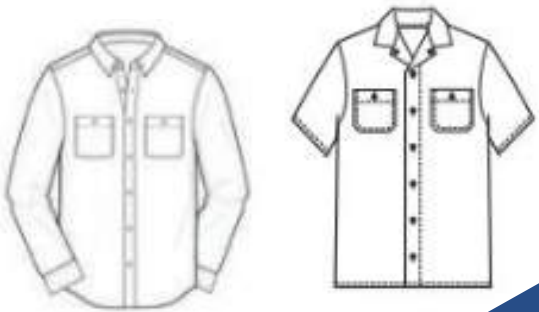
65% Polyester / 35% Cotton

- Comes in long sleeve and short sleeve
- Crease resistant
- Five buttons down and one gripper button at the neck
- Two top pockets with button closure



Sizes: S-XL (2XL-4XL Upon Request)

Navy



INDUSTRIAL APPAREL

Polo Shirt

100% Polyester Blend

- No pocket
- Shrink fade and wrinkle resistant
- Short sleeve
- Four button placket



Sizes: XS-XL (2XL-3XL Upon Request)



INDUSTRIAL APPAREL

Straight Leg Pants

65% Polyester / 35% Cotton

- Hemming services available
- Elastic inserts at the waist
- Two back pockets with button closure
- Two side slit pockets
- Belt loops around the waist

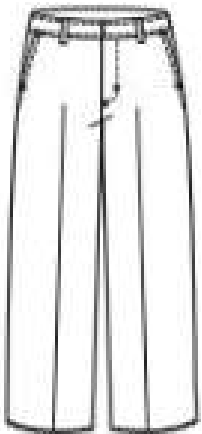


Sizes: 4-28

Black

Navy

Khaki



INDUSTRIAL APPAREL

Princess Dress

65% Polyester / 35% Cotton

- Eight pearlized buttons down the front of the dress
- Flattering bell shape
- Notched lapel collar



Sizes: 6-56

Light
Blue



INDUSTRIAL APPAREL

Smock Top

65% Polyester / 35% Cotton

- Polyester/cotton poplin
- Short Sleeve
- Princess Lines
- Two Lower Pockets



Sizes: XS-XL (2XL-4XL Upon Request)

Light
Blue



INDUSTRIAL APPAREL

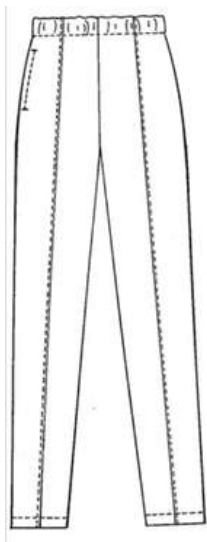
Elastic Waist Pants

65% Polyester / 35% Cotton

- Multi-stitched elastic waist band
- Two side slant insert pockets
- Classic Fit



Sizes: XS-XL (2XL-4XL Upon Request)





CULINARY APPAREL



CULINARY APPAREL

Chef Coat

65% Polyester / 35% Cotton

- Contoured structured collar
- Eight pearlized plastic buttons
- Left breast pocket
- Unisex fit



Sizes: XS-XL (2XL-6XL Upon Request)



CULINARY APPAREL

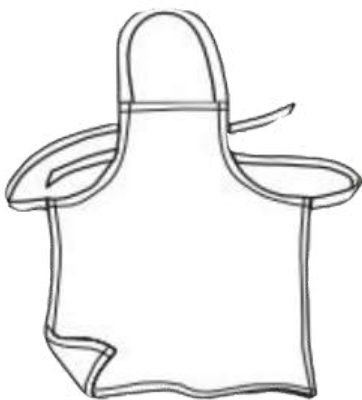
Apron

65% Polyester / 35% Cotton

- Neck strap
- Tie at the waist
- Unisex fit



Sizes: One size fits most



CULINARY APPAREL

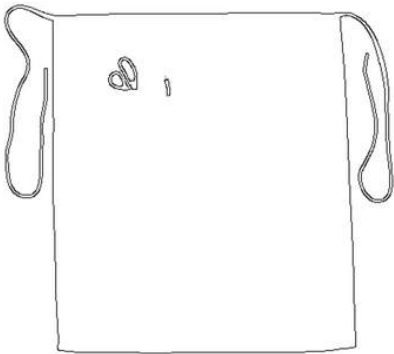
Bistro Apron

65% Polyester / 35% Cotton

- Tie at the waist
- 9"X9" pocket with pencil stall
- Two 8"X8" pockets for notepad
- Unisex fit



Sizes: One size fits most



CULINARY APPAREL

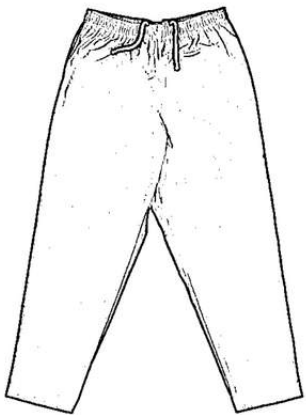
Baggy Chef Pants

65% Polyester / 35% Cotton

- 2" full elastic waist
- White relaxed draw cord
- Inseam pocket
- Right back pocket
- Unisex fit



Sizes: XS-XL (2XL-3XL Upon Request)



CULINARY APPAREL

Baggy Chef Pants

65% Polyester / 35% Cotton

- 2" full elastic waist
- White relaxed draw cord
- Inseam pocket
- Right back pocket
- Unisex fit



Sizes: 28-60





MOPS

CAUTION
WET FLOOR

MICROFIBER MOPS

Microfiber Mops

- Microfiber penetrates surface pores to remove tiny dust particles
- Made with three layers of microfiber cloth for superior absorbency and durability
- Velcro backing makes changing mop heads quick and easy

Size: 5" X 19"

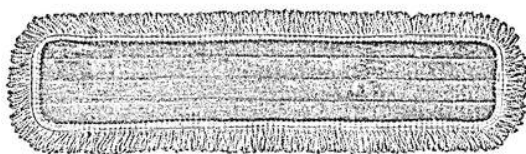


MICROFIBER MOPS

Microfiber Dust Mops

- Microfiber remove dust particles conventional mops can't reach
- Easily dusts and cleans any flat surface
- Fringe edging picks up more dirt
- Reduces chemicals, water, and energy to clean, saving time and money
- Velcro backing makes changing mop heads quick and easy

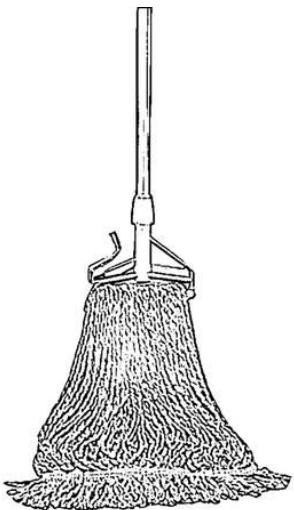
Size: 5" X 18"



MICROFIBER MOPS

Microfiber Wet Mops

- Excellent Absorbency
- Can be used for all general cleaning applications
- Provides ease of use, glides across the floor easily
- Launderable



MOP ACCESSORIES

Aluminum Microfiber Handle

- Light weight
- Ergonomic design alleviates the strain of mopping
- 360 degree swivel

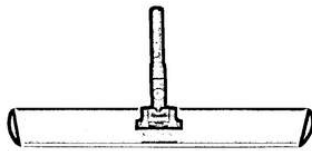
Size: 72"

Alumi
num

Microfiber Frame

- Light weight aluminum
- Low profile handle attachment
- Replaceable 1" velcro strips

Size: 3" X 16"



Alumi
num



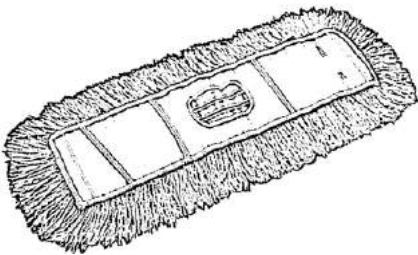
DUST MOPS

Dust Mops

- Infinity twist yarn won't fray or unravel
- Strong and lasting synthetic backing



Small	Medium	Large
5" X 24"	5" X 36"	5" X 48"



MOP ACCESSORIES

Dust Mop Frame

- Release clip releases soiled mop with one touch
- Metal frame resists cracking and chipping



Alumi
num

60" Wooden Dust Mop Handle

Size: 1" X 60"



Alumi
num

Wood

WET MOPS

Wet Mops

- Synthetic blend designed to pick up hold more water and last longer than traditional mop blends
- Anti-microbial



Size: Comes in Small, Medium, and Large

60" Wooden Wet Mop Handle

Size: 1" X 60"



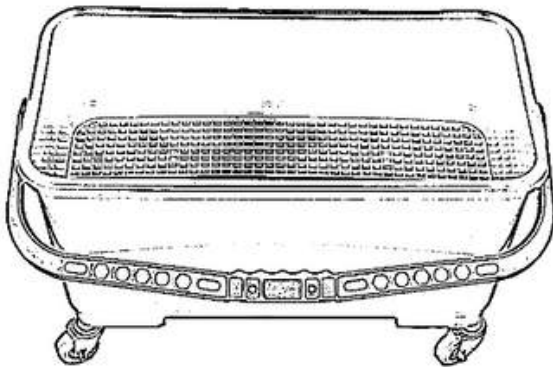
MOP ACCESSORIES

Mop Buckets

- Fits on most standard maid carts
- Push down sieve to release excess fluid
- Caters and wheels
- 6 Gallon Capacity

Size: 20" X 10.5"

Charcoal

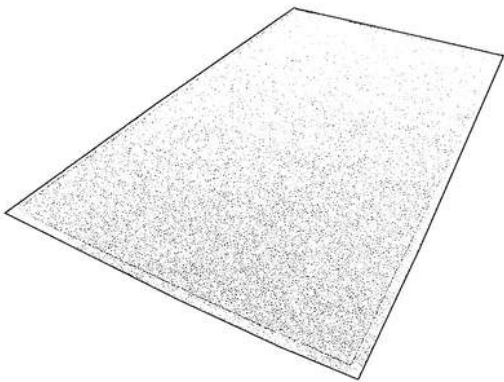




FLOOR MATS

Classic Floor Mat

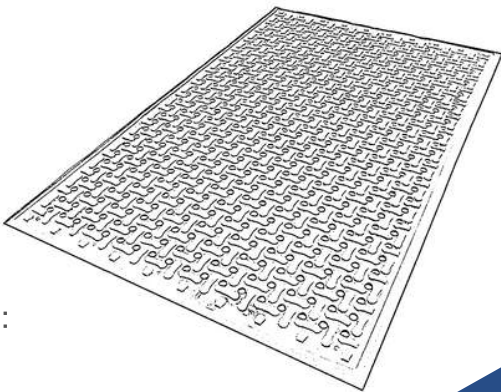
- The turf-pile construction aggressively scrapes dirt from shoes and filters moisture and dirt away from the mat surface
- Drainable borders
- Solution-dyed nylon will not fade in the sunlight



FLOOR MATS

Scraper Mats

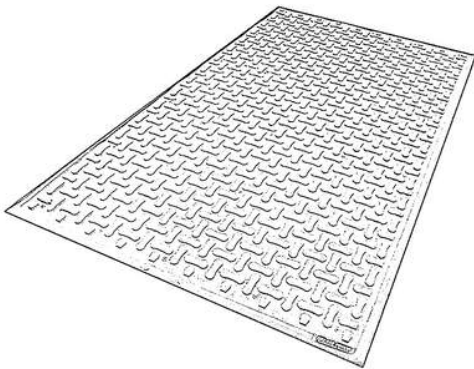
- Drainage holes allow liquid to flow through
- Lifetime anti-microbial treatment prevents odors and degradation of the mat
- Beveled edges provide a safe transition from floor to mat
- Grease and oil proof; chemical resistant; welding safe
- lightweight flexible design ensures easy handling and cleaning



FLOOR MATS

Anti-Fatigue Mats

- Bi-level design traps dirt/debris to prevent tracking
- Lifetime anti-microbial treatment prevents odors and degradation of the mat
- Beveled edges provide a safe transition from floor to mat
- Grease and oil proof; chemical resistant; welding safe
- Lightweight flexible design ensures easy handling and cleaning



FLOOR MATS

Logo Mats

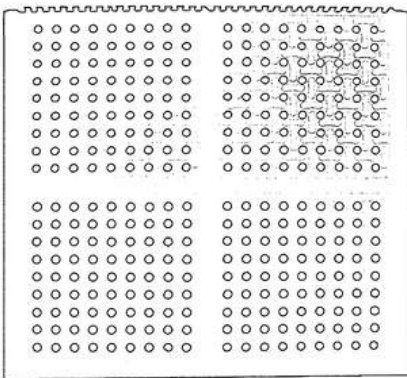
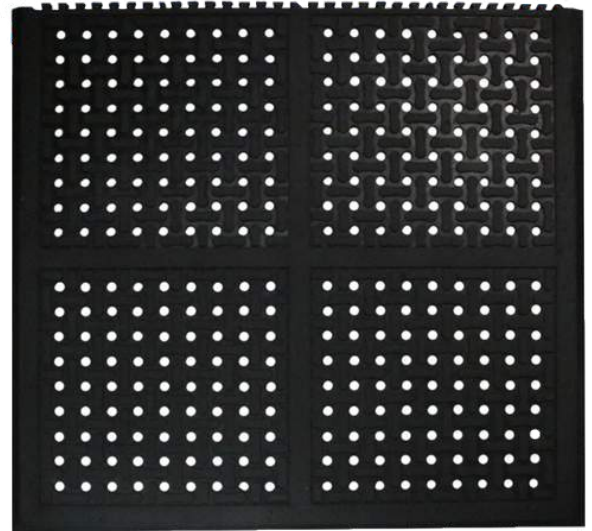
- Logos and designs are digitally printed
- fine details, shading, and 3d images can be achieved; 26 standard color options available
- high-twist heat set nylon resists crushing to better trap dirt and extend the useful life of the mat



FLOOR MATS

Kitchen Mats

- Beveled edges provide a safe transition from floor to mat
- Grease and oil proof; chemical resistant welding safe
- Lightweight and flexible design ensures easy handling and cleaning



FLOOR MATS

Sanitizing Mats

- It features a 2' X 3' well that holds an insert and your preferred liquid sanitizer
- Features a 3' x 5' carpeted section to help remove dirt from your shoes
- Sanitize, wash, wipe and walk on safely



Size:

-Mat: 3' X 7'

-Insert: 20.5" X 33"

